

Norris Electric

A Touchstone Energy® Cooperative



News

*All of us
join in wishing you a very
Merry Christmas and
Happy New Year*

DIRECTORS

Gordon McClure
Gary Buser
Ted Helmink
Dave Sheppard

Gilbert Garbe
Dean Dietrich
Scott Weiss
Dan Strine

Kurt Holscher
Ron Viehman
Justin Parcel

EMPLOYEES

Tamara Phillips (Manager)
Jim Meyer
Trisha Beckman
Amy Bickers
Ralph Bowersock Jr
Tammy Knicley
Brad Davidson
Ed Hannaman
Jeff Higgs
Steve Hunzinger
Carla Kistner
Keith Long
Matthew Mitchell
Ronnie Newkirk
Denise Pless
Travis Sipe
Erik Steffen
Tony Zuber

Tim Bohnhoff
Larry Short
Matt Maxon
Ben Bierman
Kim Boyd
Doug Casey
Bill Fields
Kelly Hinterscher
Chris Hildebrand
Arnie Johnson
Doug Klier
Justin Mahaffey
Ian Moore
Annette Stanciu
Matt Roedl
Joe Sowers
Keri Ulm
Stephanie Woods

Tim Huber
Blake Kuhl
Claude Wilson
Tyler Johnson
Jenny Britton
Casey Fulk
Brian Hemrich
Connor Walters
Scott Johnson
Becky Kocher
Jamie Mendenhall
Susan Platz
Sarah Semple
Lisa Zumbahlen
Rhonda Wilson
Zach Bolin
Dylan Davidson
Brienne Helregel

Our offices will be closed Dec. 24 and 31 for the holidays.

Outage Information Center:

We work hard year-round to deliver reliable service, but when big storms strike and damage equipment, outages can result. When they do, our entire focus is to safely and quickly restore your service. There are three ways our members can report their outage:

1. **Call 877-783-3221**
2. **Text your outage.** If you prefer to text rather than call your outage in, members will need to have their cell phone number on file at Norris Electric. Then they will need to complete a short registration process on our website, www.norrselectric.com. Once that is complete, members will be able to text their outage in. You will also receive a text when your electric is restored!
3. **Use our app.** If members have a smart phone, you can download our app and report your outage. (Sign up as a new user through online bill pay on our website to gain access.)

View Outages

Members are able to view Norris Electric's outage map by logging on to our website at www.norrselectric.com or view it on the Norris app. By viewing the map, it will give members an idea of where the outages are and how many members are affected.

Outage Updates

Facebook/Twitter – Be sure to like us on Facebook and Twitter to receive current outage information and updates.

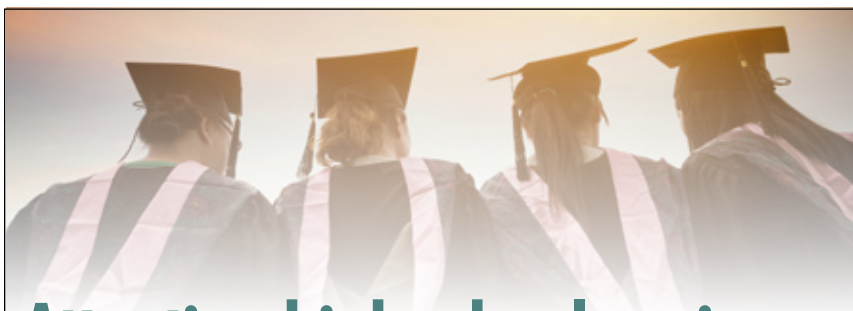


Thomas H. Moore Illinois Electric Cooperative Memorial Scholarship Program

The Illinois Electric Cooperative (IEC) Memorial Scholarship Program awards twelve \$2,000 scholarships annually to deserving students in the "electric cooperative family" entering college to assist them with their educational costs. Go to aiec.coop/iec-scholarship to learn more and to apply.

About the scholarships

- 6 scholarships are awarded to high school seniors who are the sons or daughters of an Illinois electric cooperative member receiving service from the cooperative (deadline to apply Dec. 31, 2020).
- 4 scholarships are reserved for high school seniors enrolling full-time at a two-year Illinois community college who are the sons or daughters of Illinois electric cooperative members, employees or directors (deadline to apply Dec. 31, 2020).
- 1 scholarship, the Earl W. Struck Memorial Scholarship, is awarded to a high school senior who is the son or daughter of an Illinois electric co-op employee or director (deadline to apply Dec. 31, 2020).
- 1 scholarship, the LaVern and Nola McEntire Lineworker's Scholarship, is awarded to a student to attend the lineworker's school conducted by the Association of Illinois Electric Cooperatives in conjunction with Lincoln Land Community College, Springfield, IL (deadline to apply April 30, 2021).



Attention high school seniors

Norris Electric Cooperative will award three \$1,000 scholarships to the sons or daughter of Norris Electric members who are currently receiving service from the cooperative at the time the scholarship application is submitted.

Requirements for application:

1. Must be a high school senior
2. Must begin college within a year of notification
3. Must be a full time (12 hours) student

Scholarship awarded based on:

1. Grade point average
2. College entrance test scores
3. Work & volunteer experience
4. School & community activities
5. Knowledge of electric cooperatives
6. Biographical essay

Deadline for application submission is Feb. 1, 2021

For more information contact your high school guidance department or visit the cooperative website at www.norrselectric.com to download an application.

Four ways Santa saves energy in his workshop

The holiday season is finally upon us, and Santa and his elves have been especially busy as they gear up for their biggest night of the year. It's no secret that Santa is known for running an efficient workshop—how else could he make all those toys in time for Christmas Eve? Rumor has it that one way Santa ensures an efficient workspace is through energy-saving measures.



Here are four ways Santa saves energy in his workshop.

1. Santa leaves his decorations up year-round, so by using LED holiday light strands, he's able to save on his monthly energy bills. LED holiday strands can last up to 40 seasons, which make them a great option for any festive home.
2. Santa requires several power tools to make a year's worth of new toys. That's why he insists on using cordless power tools with the ENERGY STAR rating. According to energystar.gov, if all power tools in the U.S. used ENERGY STAR-rated battery chargers, 2 billion kWh hours of electricity could be saved – that's equivalent to reducing greenhouse gas emissions by 1.7 million tons!
3. Mrs. Claus loves to keep warm by the fire in the evenings, and Santa

knows one of the best tricks to ensure fireplace efficiency. While a fireplace can keep a small area of your home cozy and warm, it can also pull heated air from the room through the chimney. That's why Santa always closes the fireplace flue when a fire isn't burning.

4. Santa also saves energy by using power strips. Power strips are ideal for workshops, craft nooks, game rooms and other spaces in your home. With one simple switch, you can conveniently control several devices and electronics that are plugged into the power strip.

This holiday season, let's take a page from Santa's book and remember to save energy when possible. With these four tips, you'll be well on your way to savings and Santa's "nice" list!

Gift of Energy Program

What do you give to the person who already has everything? How about the person who doesn't have enough? Why not give the gift of energy to someone you know who might appreciate one less bill to pay?

While most people wouldn't normally look to their electric cooperative for gift ideas, Norris Electric Cooperative is offering just that. Through its Gift of Energy program, anyone can make a payment on a cooperative member's

account by filling out the form below or stopping by the office.

The Gift of Energy program provides people the opportunity to make life a little easier for someone they care about.

Gift of Energy Program

Gift Amount \$ _____ From: _____

Memer name (s) _____ Phone: _____


FOR ANY CLARIFICAION QUESTIONS

Member address _____

Member Phone _____ Keep Anonymous

SUBMIT CHECK TO
NORRIS ELECTRIC COOP

8543 N State Hwy 130, Newton IL 62448
1-877-783-8765





Welcome, Brianne

Norris Electric would like to welcome Brianne Helregel. Brianne started her career with Norris on Oct. 19 as a member service representative. Brianne has a bachelor's degree in accounting from Eastern Illinois University. In her spare time, Brianne likes to be outdoors with Family and Friends.

Welcome to the co-op family Brianne!

2021 Annual Meeting Postponed

As a proactive measure related to COVID-19 and the social distancing recommendations made by the CDC, Norris Electric Cooperative has postponed its 2021 Annual Meeting that is normally scheduled in February.

We are exploring several options for the meeting. Once a date and details are determined, we will publish the new information regarding the Annual Meeting in our Illinois Country Living center section and share it on social media.

Stay tuned.....

Try Norris Electric's app!

Norris Electric has made it easier than ever to monitor your account through the Norris Electric Coop App.

This is such a powerful tool for our members to engage and take charge of their account.

Here is a list of the tools you can access on the Norris Electric Coop App:

- Make a payment to your account by a touch of a few buttons. No more checks or late payments!
- View your payment/bill history
- Report an outage – easy peasy with the Norris App...no phone call to make and you will get a notification when your power is restored!

- Usage graphs – this gives our members an idea of their usage consumption and the time of day it is being used. It also tracks the weather as temperatures affect usage.

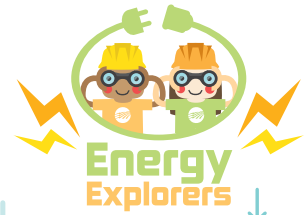
- Alerts and reminders – this is a great resource if you want to be notified of your due date, returned check alert, payment confirmation, high energy usage, outage declared and outage restored.

If you have not downloaded our app ... what are you waiting for? Our app is designed to give you fast, secure account access so you can get on with your life! (Sign up as a new user through online bill pay on our website to gain access.)

WINTER WONDERLAND WORD SEARCH

Can you find all the words associated with winter in the puzzle below?

Use the word bank to check your work.



E	M	C	G	H	S	L	B	N	F	L	L	B	L	
P	K	E	A	R	M	U	F	F	S	L	R	L	K	L
P	B	A	V	I	S	I	E	A	X	A	A	K	L	
X	W	E	L	H	S	E	T	B	W	N	D	I	C	U
P	B	C	N	F	G	O	W	T	K	I	I	C	B	S
N	L	A	F	Y	W	O	Q	E	E	Z	G	I	C	R
R	C	L	C	E	N	O	T	Y	G	N	E	C	V	U
L	O	P	C	S	X	M	N	I	D	Y	S	L	I	H
W	A	E	H	D	N	S	M	S	A	Z	C	E	B	R
Z	I	R	Y	L	L	I	H	C	O	U	J	S	K	W
C	X	I	R	Q	H	C	Z	L	C	A	X	W	W	L
P	H	F	O	Y	V	S	I	W	O	H	O	C	S	M
B	P	I	P	C	O	O	Y	J	C	D	A	J	Y	L
I	Z	W	Q	F	H	E	V	F	M	D	S	P	S	P
Y	F	E	U	H	Z	V	D	N	L	W	R	B	Q	F



WINTER ENERGY EFFICIENCY TIP:

Instead of turning up the heat in your home, wear an extra layer of clothing or get cozy under your favorite blanket!

WORD BANK:

- snowflake
- mittens
- scarf
- snowball
- chilly
- icicles
- cocoa
- earmuffs
- fireplace
- blanket